

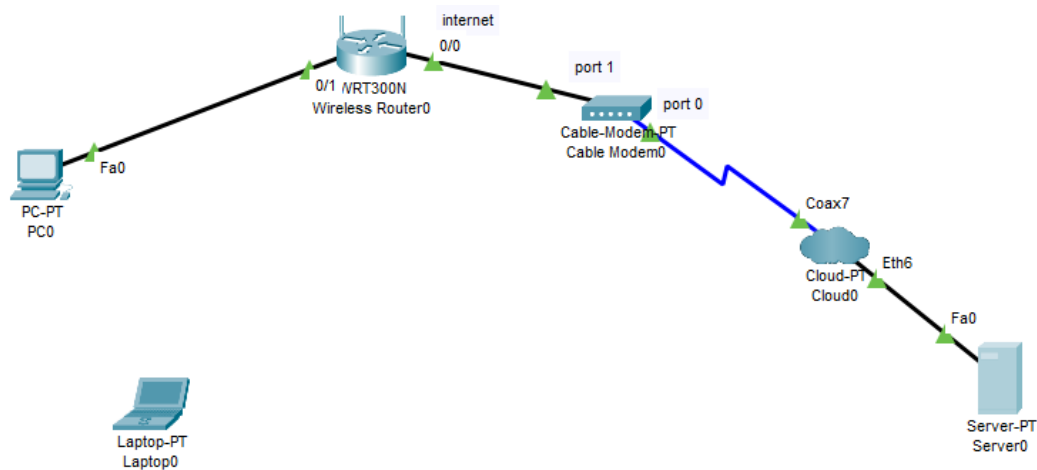
Practical 8

Aim: Configure Radio Interfaces through the GUI

Components

- 1 Laptop
- 1 PC
- 1 WRT300N
- 1 Cable-Modem PT
- 1 Cloud-PT
- 1 Server-PT
- Copper Cross-Over wire
- Coaxial wire

Configure the System



Change the wired component to wireless in Laptop

Switch off the Laptop's and swap out the Ethernet port with a Wireless Port (WMP300N), and then switch it on back again.

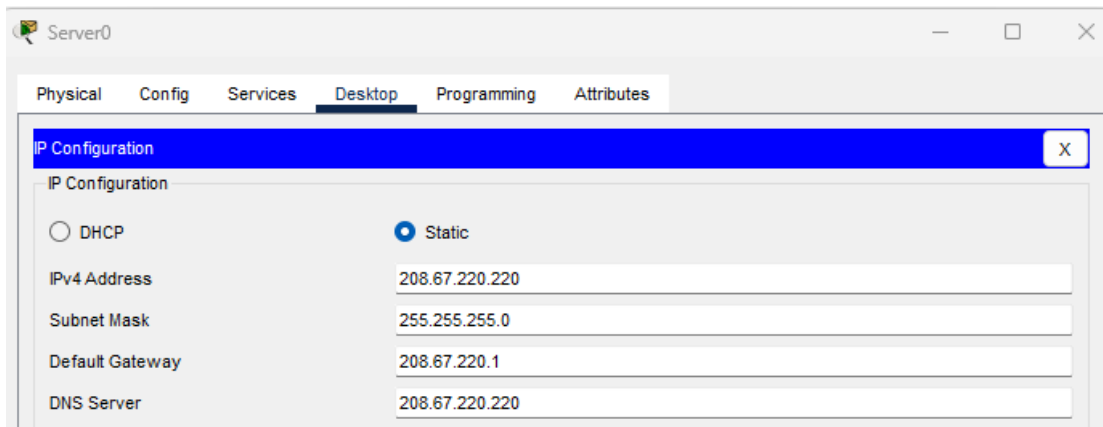


Configure PC0

Change from Static to DHCP



Configure Server0



Configure wireless router

In GUI under **Basic Setup** Change DNS server scroll down and **Save**

DHCP Server: Enabled Disabled DHCP Reservation

Start IP Address: 192.168.0.

Maximum number of Users:

IP Address Range: 192.168.0. 1 - 1

Client Lease Time: minutes (0 means one day)

Static DNS 1: . . .

Static DNS 2: . . .

Static DNS 3: . . .

WINS: . . .

Configuring DNS Server in Server0

Do the following changes and hit **Save**

The screenshot shows the 'Services' tab in the Server0 configuration window. The 'DHCP' service is selected in the left-hand menu. The configuration for the 'FastEthernet0' interface is shown with the following fields:

- Interface: FastEthernet0
- Service: On
- Pool Name: serverPool
- Default Gateway: 208.67.220.220
- DNS Server: 208.67.220.220
- Start IP Address: 208.67.220.2
- Subnet Mask: 255.255.255.0
- Maximum Number of Users: 50
- TFTP Server: 0.0.0.0
- WLC Address: 0.0.0.0

Buttons for 'Add', 'Save', and 'Remove' are visible. Below the configuration fields is a table showing the DHCP pool configuration:

Pool Name	Default Gateway	DNS Server	Start IP Address	Subnet Mask	Max User	TFTP Server	WLC Address
serverPool	208.67.2...	208.67.2...	208.67.2...	255.255...	50	0.0.0.0	0.0.0.0

Under DNS tab add the following record and **Add**

The screenshot shows the 'DNS' service configuration in the Server0 configuration window. The 'DNS Service' is turned on. A resource record is added with the following details:

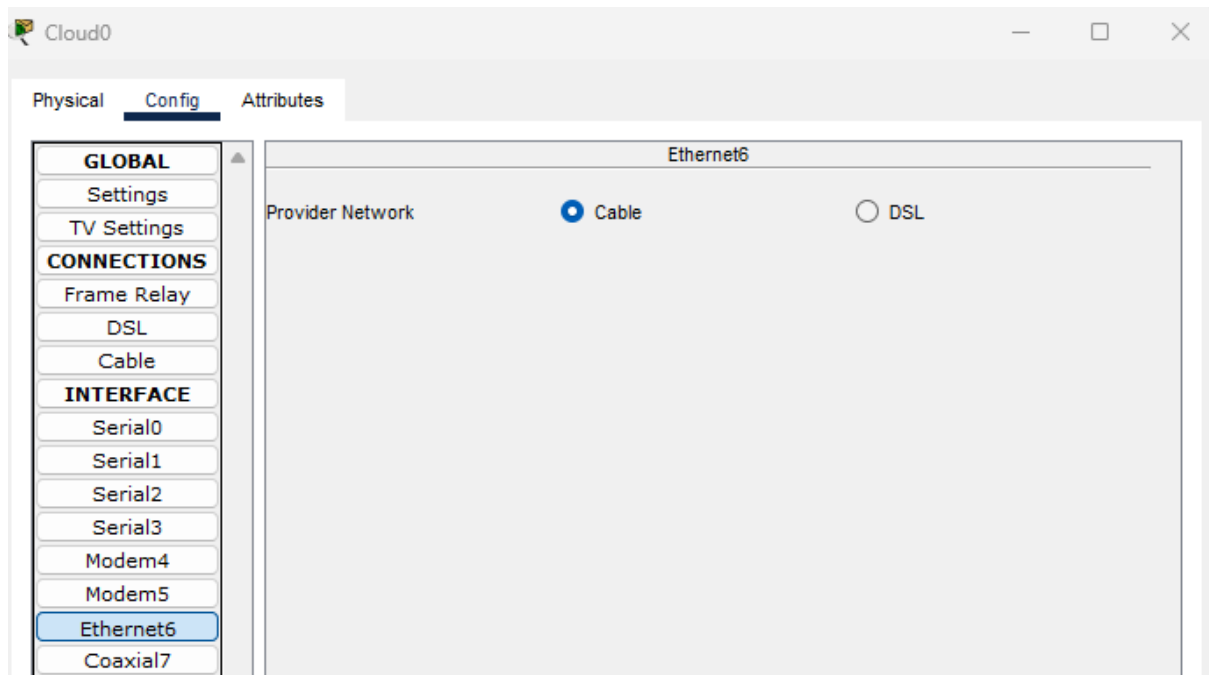
- Name: cisco.com
- Type: A Record
- Address: 208.67.220.220

Buttons for 'Add', 'Save', and 'Remove' are visible. Below the configuration fields is a table showing the resource records:

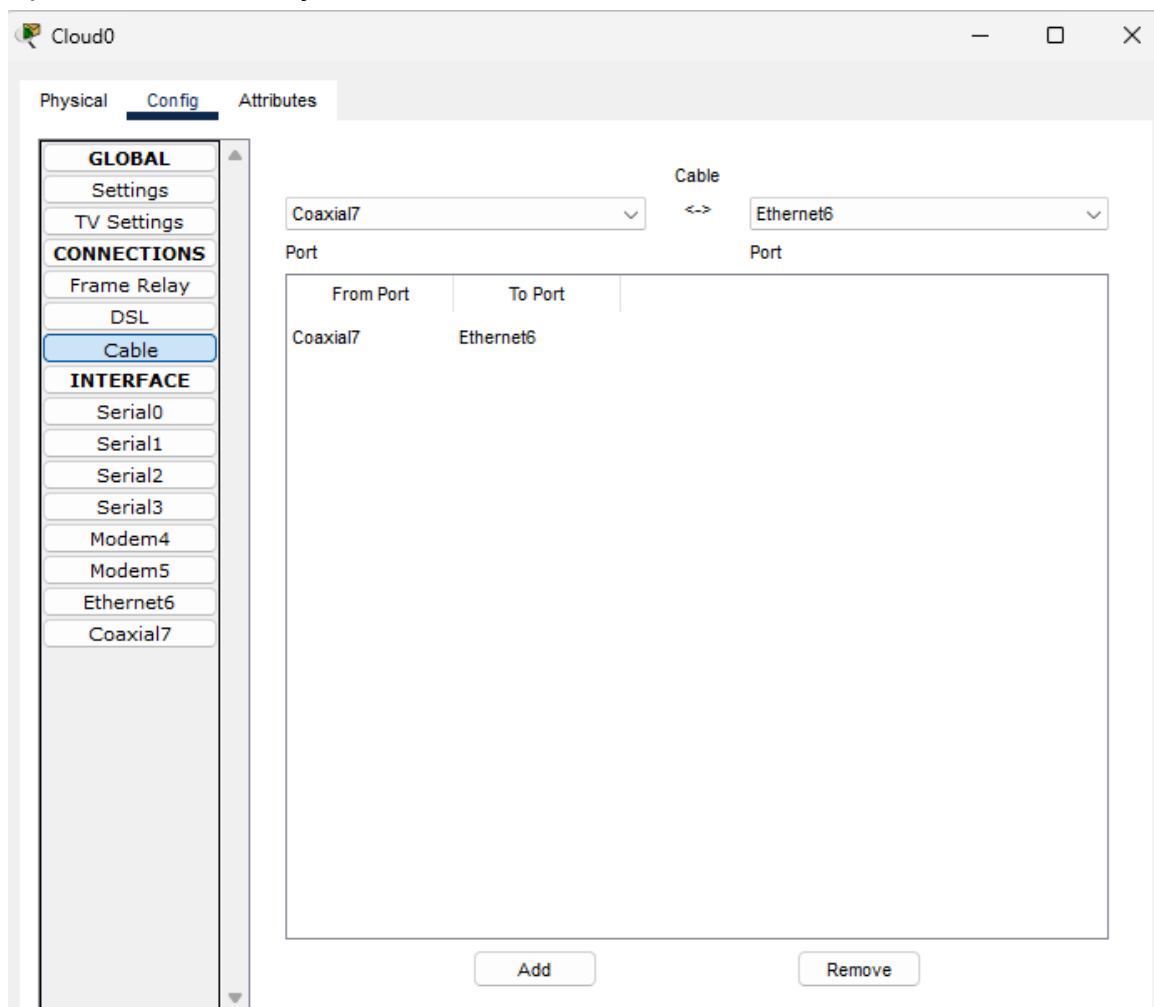
No.	Name	Type	Detail
0	cisco.com	A Record	208.67.220.220

Configuring Cloud

In Ethernet6 Tab switch from **DSL** to **Cable**



Open **Cable** tab and just click **Add**



Pinging DNS Server from PC0

```
C:\>ping 208.67.220.220

Pinging 208.67.220.220 with 32 bytes of data:

Reply from 208.67.220.220: bytes=32 time=2ms TTL=127
Reply from 208.67.220.220: bytes=32 time=8ms TTL=127
Reply from 208.67.220.220: bytes=32 time=1ms TTL=127
Reply from 208.67.220.220: bytes=32 time=9ms TTL=127

Ping statistics for 208.67.220.220:
    Packets: Sent = 4, Received = 4, Lost = 0 (0% loss),
Approximate round trip times in milli-seconds:
    Minimum = 1ms, Maximum = 9ms, Average = 5ms

C:\>
```

Pinging DNS Server from Laptop

```
C:\>ping 208.67.220.220

Pinging 208.67.220.220 with 32 bytes of data:

Reply from 208.67.220.220: bytes=32 time=33ms TTL=127
Reply from 208.67.220.220: bytes=32 time=16ms TTL=127
Reply from 208.67.220.220: bytes=32 time=16ms TTL=127
Reply from 208.67.220.220: bytes=32 time=18ms TTL=127

Ping statistics for 208.67.220.220:
    Packets: Sent = 4, Received = 4, Lost = 0 (0% loss),
Approximate round trip times in milli-seconds:
    Minimum = 16ms, Maximum = 33ms, Average = 20ms

C:\>|
```